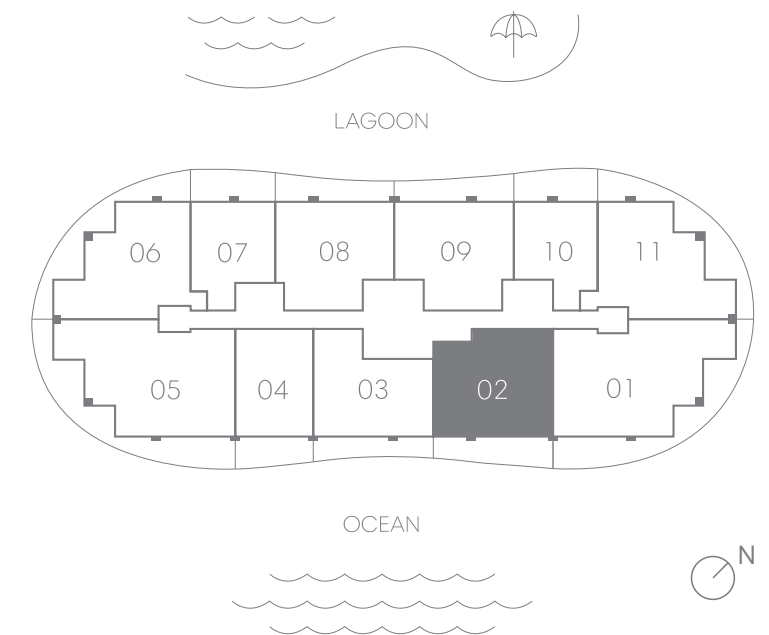
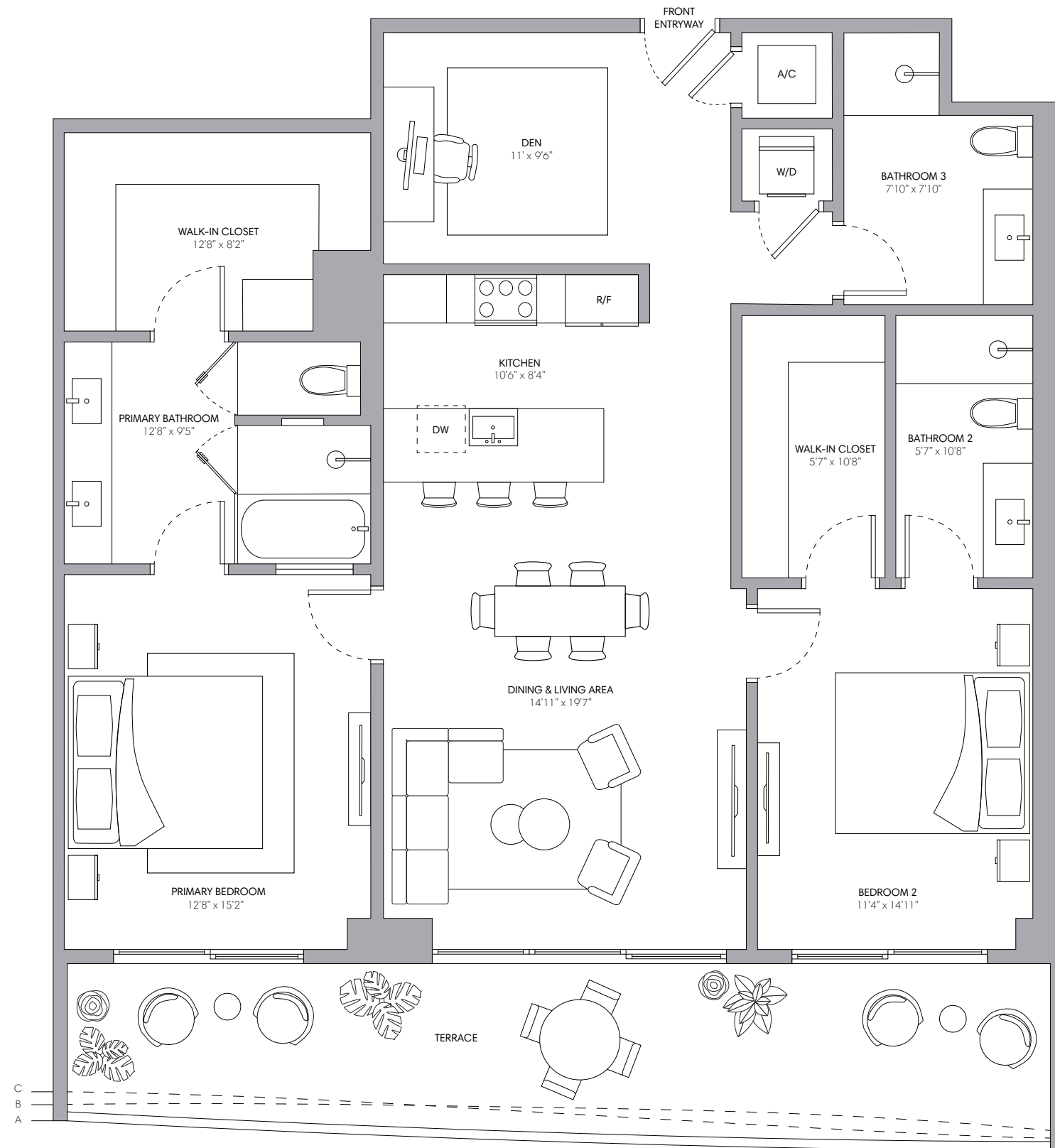


Residence 02

2 BEDROOMS + DEN | 3 BATHROOMS

INTERIOR	1,545 SQ FT 143 SQ M
EXTERIOR A (Floors 9, 12, 16, 19, 22, 25, 28)	313 SQ FT 29 SQ M
EXTERIOR B (Floors 8, 11, 15, 18, 21, 24, 27)	284 SQ FT 26 SQ M
EXTERIOR C (Floors 10, 14, 17, 20, 23, 26, 29)	259 SQ FT 24 SQ M
TOTAL	1,804 - 1,858 SQ FT 167 - 172 SQ M



Oral representations cannot be relied upon as correctly stating the representations of the developer. For correct representations, reference should be made to the documents required by Section 718.503, Florida Statutes, to be furnished by a developer to a buyer. The dimensions stated for any depicted unit floor plan are approximate because there are various recognized methods for calculating the square footage of a unit. The square footage stated herein is calculated from the exterior boundaries of the exterior walls to the centerline of interior demising walls without deductions for cutouts, curves, or architectural features. This method typically results in quoted dimensions greater than the dimensions that would be determined by using other accepted methods. The illustrations and images are conceptual. The floor plan, unit layout, locations of windows, doors, closets, plumbing fixtures, mechanical equipment, appliances, structural elements, architectural design elements and the uses, configurations, and entries to rooms may be changed based on final approved plans, permitting, and completed construction. The furniture layout and the use of space illustrated are suggested uses only and not intended to guaranty any specific use of space or accommodation of specific furnishings, furnishings, design features, fixtures, and décor illustrated are conceptual and may not be included with a unit purchase. Consult the developer's prospectus which will be provided to you by the developer to learn what is included with a unit purchase and to review the unit square footage calculation method to be relied upon, which is set forth in the developer's prospectus.